

JH275

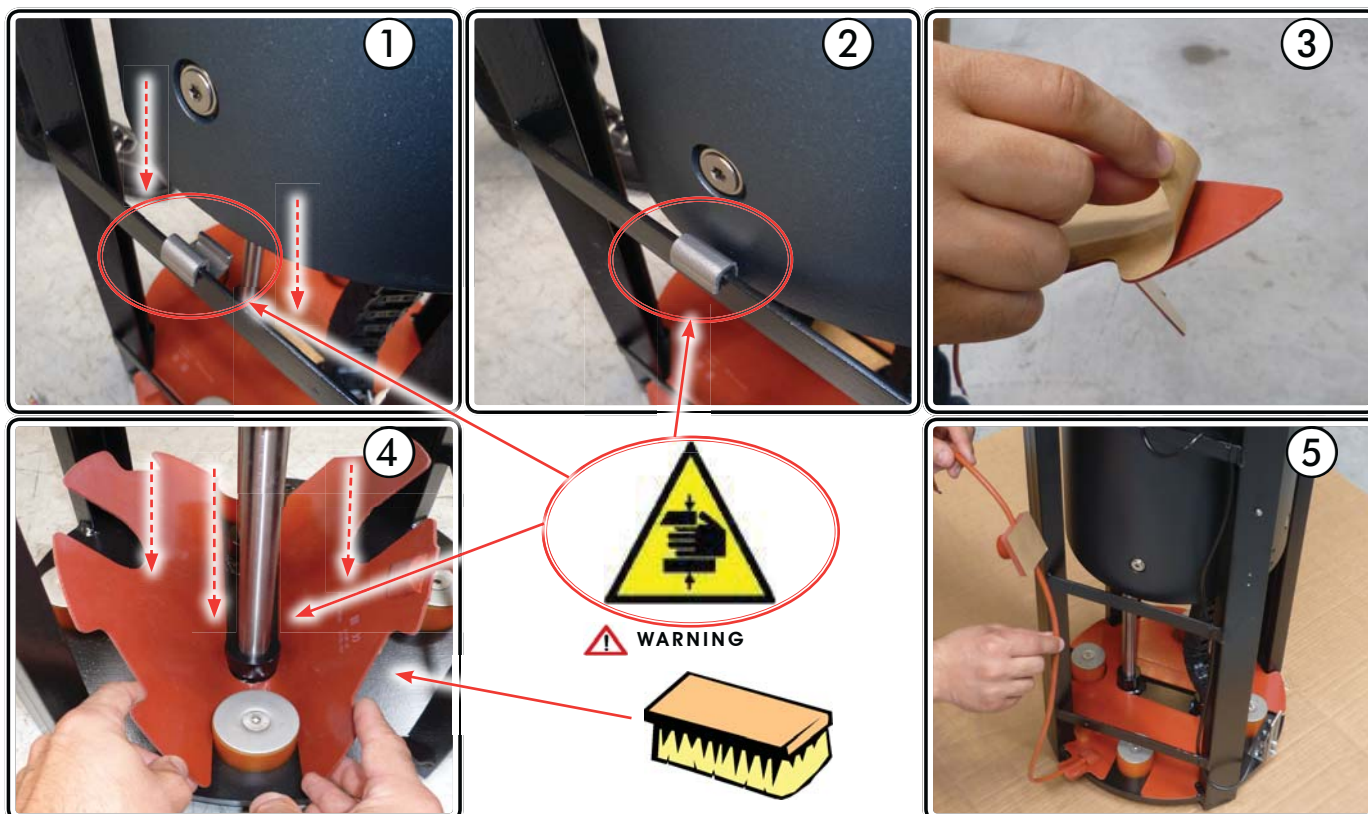
FAAC S.p.A. Via Calari, 10 - 40069 Zola Predosa (BO) - ITALY - Tel. +39.051.61724 - www.faacgroup.com

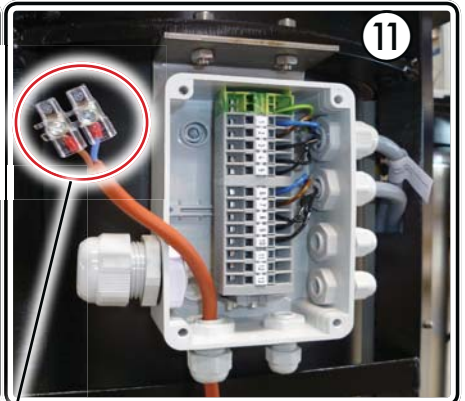
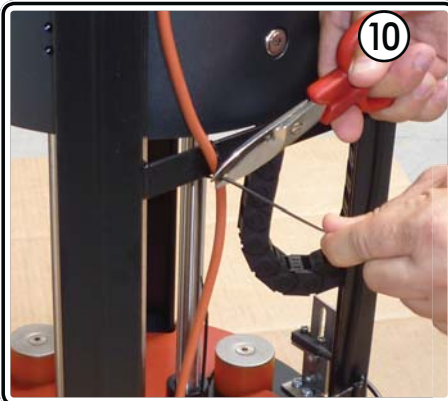
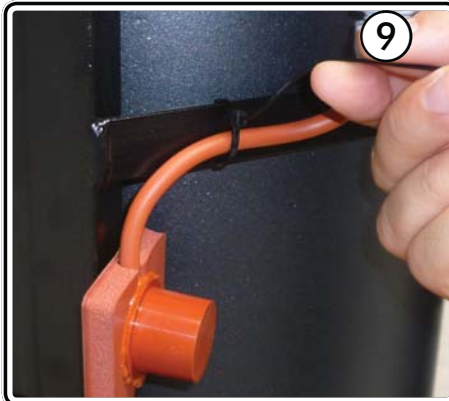
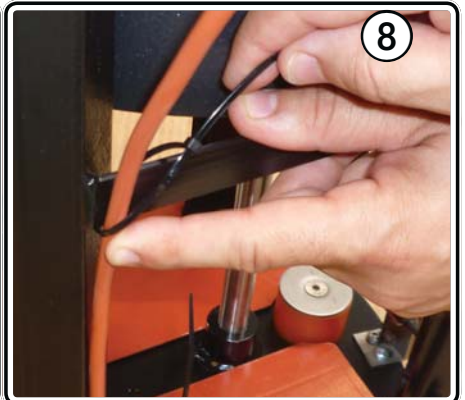
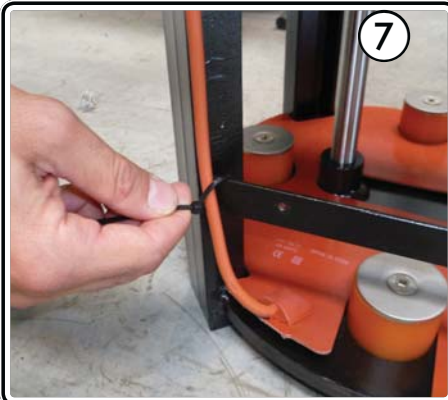
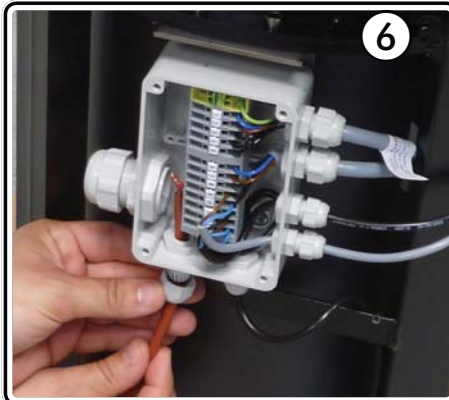


CARATTERISTICHE TECNICHE/TECHNICAL SPECIFICATIONS/CARACTÉRISTIQUES TECHNIQUES/ TECHNISCHE DATEN/CARACTERÍSTICAS TÉCNICAS/TECHNISCHE EIGENSCHAPPEN

I	ALIMENTAZIONE 230 ~ 50-60Hz	POTENZA ASSORBITA 80 W	SOGLIE DI INTERVENTO ON < 5°C - OFF > 15°C	GRADO DI PROTEZIONE IP 68	TEMPERATURA DI LAVORO 200°C
GB	POWER SUPPLY 230 ~ 50-60Hz	ABSORBED POWER 80 W	OPERATING THRESHOLDS ON < 5°C - OFF > 15°C	PROTECTION CLASS IP 68	OPERATING TEMPERATURE 200°C
F	ALIMENTATION 230 ~ 50-60Hz	PUISSANCE ABSORBÉE 80 W	SEUILS D'INTERVENTION ON < 5°C - OFF > 15°C	DEGRÉ DE PROTECTION IP 68	TEMPÉRATURE DE FONCTIONNEMENT 200°C
D	STROMVERSORGUNG 230 ~ 50Hz	AUFGENOMMENE LEISTUNG 80 W	AUSLÖSESCHWELLEN ON < 5°C - OFF > 15°C	SCHUTZKLASSE IP 68	BETRIEBSTEMPERATUR 200°C
E	ALIMENTACIÓN 230 ~ 50-60Hz	POTENCIA ABSORBIDA 80 W	UMBRAL DE INTERVENCIÓN ON < 5°C - OFF > 15°C	GRADO DE PROTECCIÓN IP 68	TEMPERATURA DE FUNCIONAMIENTO 200°C
NL	VOEDING 230 ~ 50-60Hz	OPGENOMEN VERMOGEN 80 W	INSCHAKELMIJ ON < 5°C - OFF > 15°C	BESCHERMINGSGRAAD IP 68	WERKTEMPERATUUR 200°C

ISTRUZIONI DI ASSEMBLAGGIO/ASSEMBLY INSTRUCTIONS/INSTRUCTIONS D'ASSEMBLAGE/ MONTAGEANWEISUNGEN/INSTRUCCIONES DE MONTAJE/ASSEMBLAGE-INSTRUCTIES





I Collegare a 230V ~ 50-60 Hz - utilizzando i 2 poli liberi del cavo FG7OR-0,6/1k V-16G1,5 (16 cavi da 1,5mm²)

GB Connect to 230V ~ 50-60 Hz by using the 2 free poles of cable FG7OR-0,6/1k V-16G1,5 (16 cables, 1,5mm²)

F Connecter au 230V ~ 50Hz en utilisant les 2 pôles libres du câble FG7OR-0,6/1k V-16G1,5 (16 câbles de 1,5mm²)

D An 230V ~ 50-60Hz anschließen unter Verwendung der 2 freien Pole des Kabels FG7OR-0,6/1k V-16G1,5 (16 Kabel, 1,5mm²)

E Conecte a 230V ~ 50-60Hz utilizando 2 polos libres del cable FG7OR-0,6/1k V-16G1,5 (16 cables, 1,5mm²)

NL Op 230V ~ 50-60Hz aansluiten, waarbij de 2 vrije polen van de kabel FG7OR-0,6/1k V-16G1,5 (16 kabels van 1,5mm²) gebruikt moeten worden.

